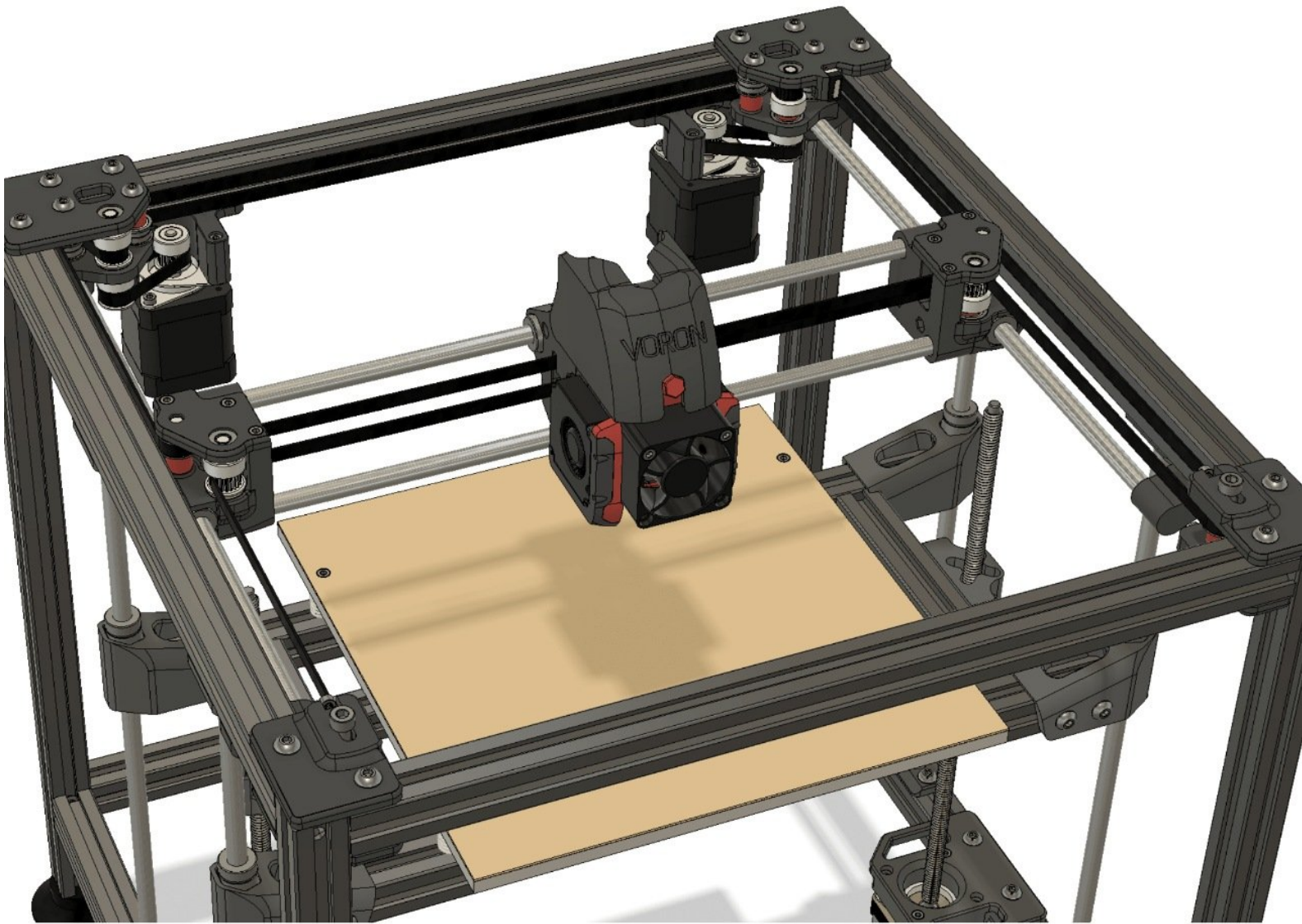


# Voron Design

## 11 - Assemble Toolhead

Written By: ArmyAg08



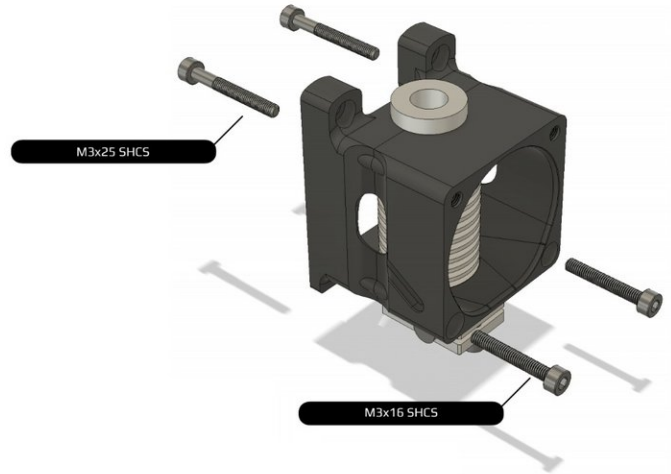
**TOOLS:**

- [Allen Key Set](#) (1)

**PARTS:**

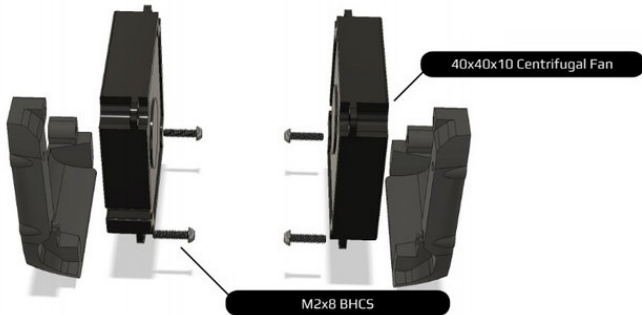
- [v6 Hotend Assembly](#) (1)
- [M3x25 SHCS](#) (4)
- [M3x16 SHCS](#) (2)
- [M2x8 BHCS](#) (8)
- [40x40 Centrifugal Fan](#) (2)
- [M3x12 SHCS](#) (2)
- [40x40 Axial Fan](#) (1)
- [Cable Tie](#) (2)

## Step 1 — Assemble Hotend Mount



- Add Teflon tape at the groove mount if your hotend rotates.

## Step 2 — Assemble Part Cooling Fans



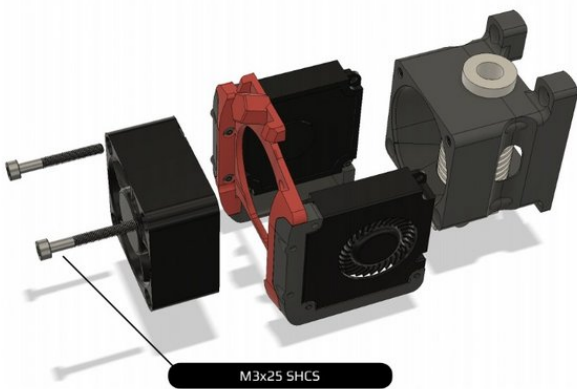
- Insert wisdom here.

### Step 3 — Assemble Part Cooling Fan Mounts



- Insert wisdom here.

### Step 4 — Assemble Toolhead



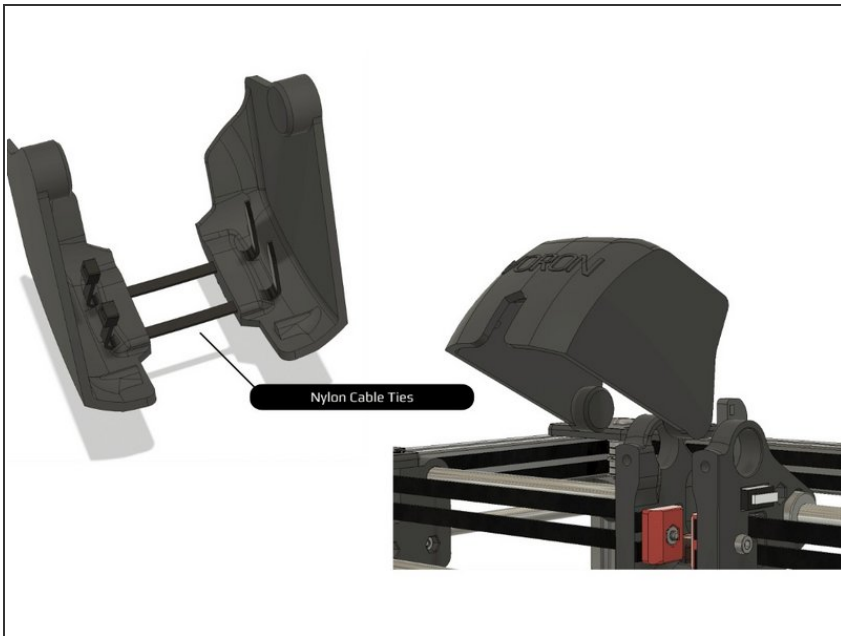
- Insert wisdom here.

## Step 5 — Verify Assembly



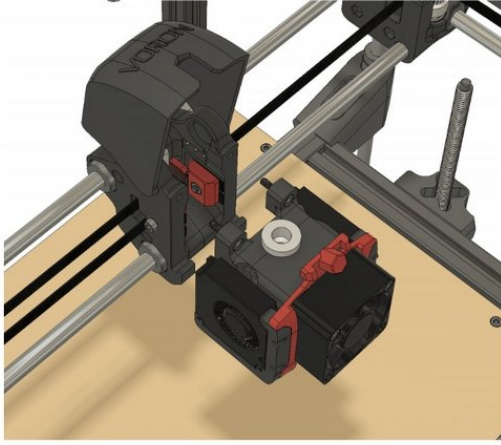
- Insert wisdom here.

## Step 6 — Assemble Wire Cover



- Insert wisdom here.

## Step 7 — Assemble Toolhead to X Carriage



- Insert wisdom here.

## Step 8



- [Continue to the LCD Module](#)